

CANYON ISLES PRESERVE PLAT THREE

(A.K.A. BUTTS PRESERVE)

A PARCEL OF LAND IN THE NORTHEAST QUARTER OF SECTION 14,
TOWNSHIP 45 SOUTH, RANGE 41 EAST, PALM BEACH COUNTY, FLORIDA

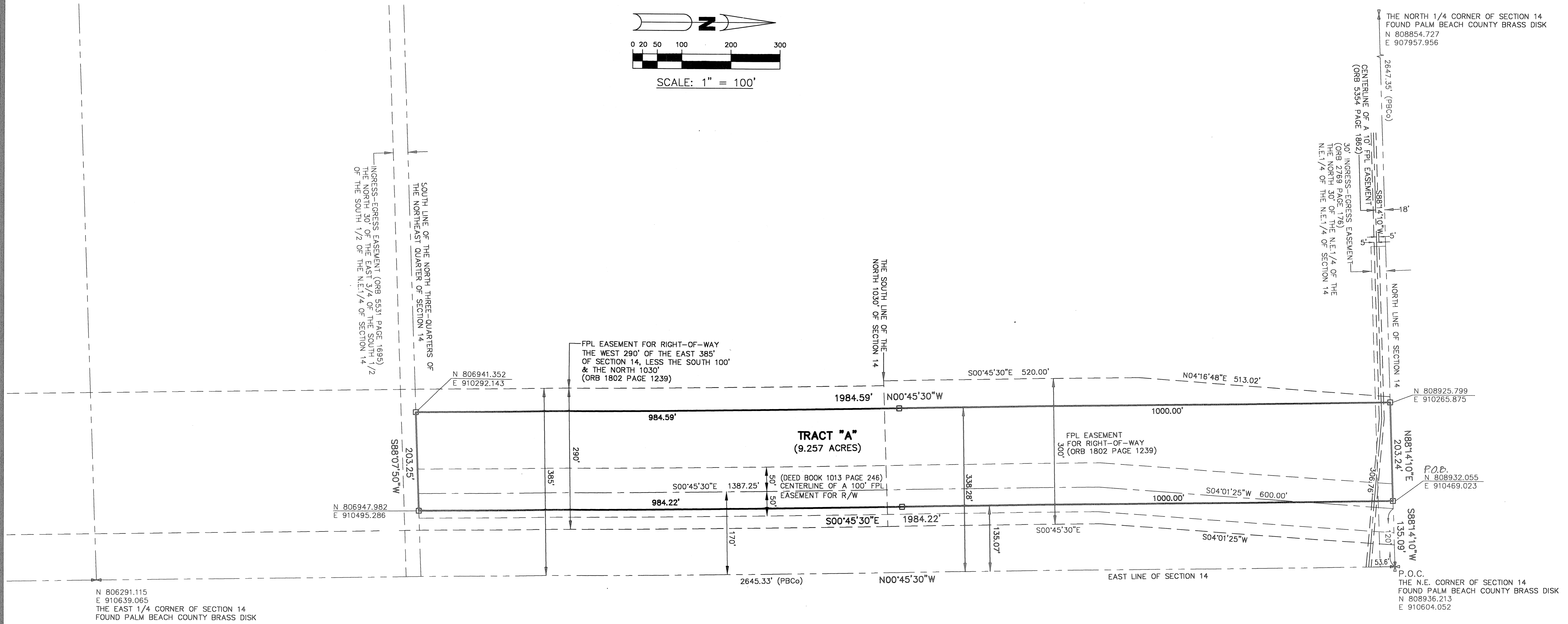
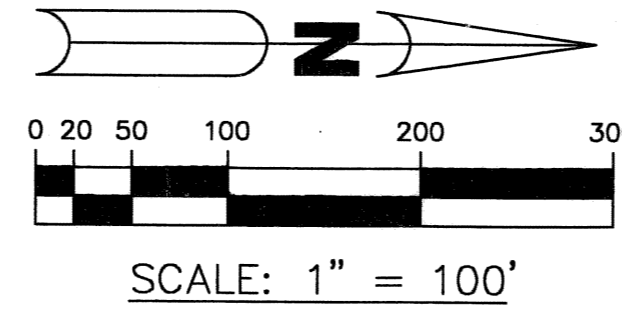
SHEET 2 OF 2 FEBRUARY, 2005

180

- ABBREVIATION LEGEND:**
- P.O.B. - POINT OF BEGINNING
 - P.O.C. - POINT OF COMMENCEMENT
 - PRM - PERMANENT REFERENCE MONUMENT
 - - PERMANENT REFERENCE MONUMENT "LB6473" SET
 - - MONUMENT, 1/2" IRON ROD WITH "BROWN & PHILLIPS" CAP TO BE SET
 - U.E. - UTILITY EASEMENT
 - D.E. - DRAINAGE EASEMENT
 - R/W - RIGHT-OF-WAY
 - ⊕ - CENTERLINE
 - L.W.D. - LAKE WORTH DRAINAGE DISTRICT
 - R/W - RIGHT-OF-WAY
 - ORB - OFFICIAL RECORD BOOK
 - P.B. - PLAT BOOK
 - D.B. - DEED BOOK
 - FND. - FOUND
 - CONC. - CONCRETE
 - (P) - PLAT BEARING OR DISTANCE
 - (M) - MEASURED BEARING OR DISTANCE
 - (C) - CALCULATED BEARING OR DISTANCE
 - (D) - DEEDED BEARING OR DISTANCE
 - PBCo - PALM BEACH COUNTY

THIS INSTRUMENT WAS PREPARED BY
JOHN E. PHILLIPS III, P.S.M. 4826

BROWN & PHILLIPS, INC.
 CERTIFICATE OF AUTHORIZATION # LB-6473
 901 NORTHPOINT PARKWAY, SUITE 305
 WEST PALM BEACH, FLORIDA 33407
 561-615-3988, 615-3986 FAX



CANYON ISLES PRESERVE PLAT 3
 PAGE 180
 SECTION 14
 TOWNSHIP 45 SOUTH
 RANGE 41 EAST
 PALM BEACH COUNTY
 FLORIDA
 FEBRUARY 2005
 JOHN E. PHILLIPS III
 P.S.M. 4826